

MSP430 Family Development Tool



Instruments
General Instrumentation Logic Labs

Features

- *Easy to interface with Parallel port*
- *Simple JTAG (IEEE 1149.1) Connection With External Hardware*
- *Supports Various Series of MSP430 Core*
 - MSP430x11x1A, MSP430x12x/x1xx2
 - MSP430x13x/x14x/x15x/x16x
 - MSP430x41x, MSP430FE42x, MSP430FW42x
- *Real Time Emulation*

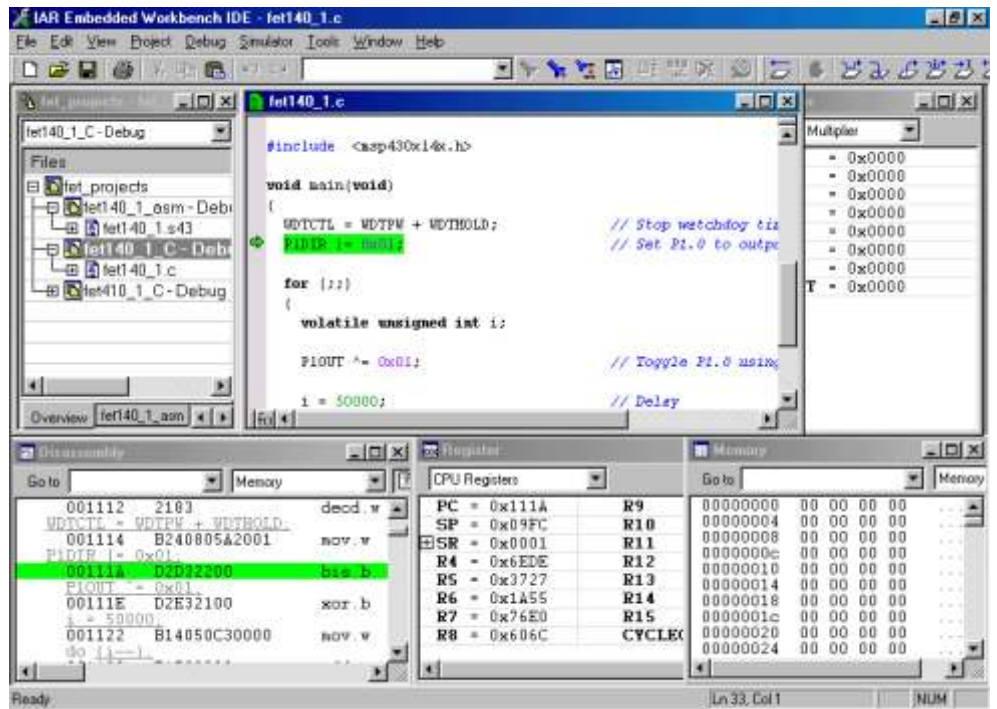
Gill Instruments offers a complete development tool solution for the MSP430 microcontroller family produced by Texas Instruments Corporation. Many Controller families offer current savings modes. Nevertheless the current consumption can still be too high with battery supplied applications. A genuine alternative is the MSP430-Series of Texas Instruments. This 16 Bit Controller works from 1.8 V to 3.6 V and uses 500 μ A in the active condition and still less (depending upon clock frequency). Some applications get along with small clock frequencies, then the river of the MSP430 can be lowered even into the range from something over 1 μ A. For computer-bound program sections you can switch the clock frequency of the MSP430 by software to higher values. These controllers are available in OTP as well as flash versions. The best part of this flash version is it can be reprogrammed again and again with the help of MSP430 FET (Flash Emulation Tool). Apart from user friendly the Tool helps in developing the Applications faster, thus give you a fast entrance, We offer inexpensive development kits (MSP430 Flash emulation Tool) for different Controllers to you.



The Best way to work with MSP430

Features of IAR systems Workbench

- Total Integration of Compiler, Assembler, Linker and Debugger.
- Hierarchical project representation
- Compiler is fully ANSI C Compatible



The IAR Embedded Workbench IDE with its C/C++ compiler and C-SPY debugger is the most complete and easy-to-use set of development tools available today for professional embedded applications. IAR Embedded Workbench offers the same intuitive user interface - a truly Integrated Development Environment - regardless of the microprocessor you have chosen from TI, coupled with complete and target-specific support for each and every chip. The IAR Embedded Workbench runs under Windows 98/ME/NT4/2000/XP.

C-SPY Simulator Debugger

- I/O and interrupt simulation.
- Complex code and data breakpoints.
- Back step possibility via the call stack
- IAR C-SPY high-level language simulator debugger.
- Plug-in architecture allows support for any RTOS-aware debugging.

C/C++ Compiler

- ANSI standard C compiler including support for Embedded C++
- Chip-specific C extensions to suit embedded development.
- Easy and fast interrupt handling directly in C.
- Position-independent code.
- Generates mixed C and assembler listings.
- Intrinsic functions support power-down module.
- Support for the hardware multiplier peripheral module.
- Floating-point values are represented by 32- and 64-bit numbers in standard IEEE format